

What is GIMS?

GIMS - A geographic information system designed to capture, store, manipulate, analyze, manage, and present all types of spatial or geographical data.

GIMS provides a timely array of quality geographic and demographic related data, services and support to the City of Houston governmental infrastructure, its citizens, the private sector, and other governmental entities.

To Use the City of Houston GIMS

Visit <http://www.gims.houstontx.gov/PortalWS/MainPortal.aspx> with Internet Explorer

Click on the GIMS (Public) link

The City of Houston
Official Site for Houston, Texas

Home | I Want To | Government | Residents | Business | Departments | Visitors | En Espanol

Public Works and Engineering *GIMS Application Portal*

Registered Users:

- GIMS - COH Employees
- GIMS - Utility Analysis
- GIMS - VW
- Mobility Permit System
- Street Cut Permit System (SCPS)
- Steel Plate Permit System
- WCR Data Management
- WCR Data Utility
- Survey Parcel Data
- Traffic Management
- GIMS Administration Tool

All Users:

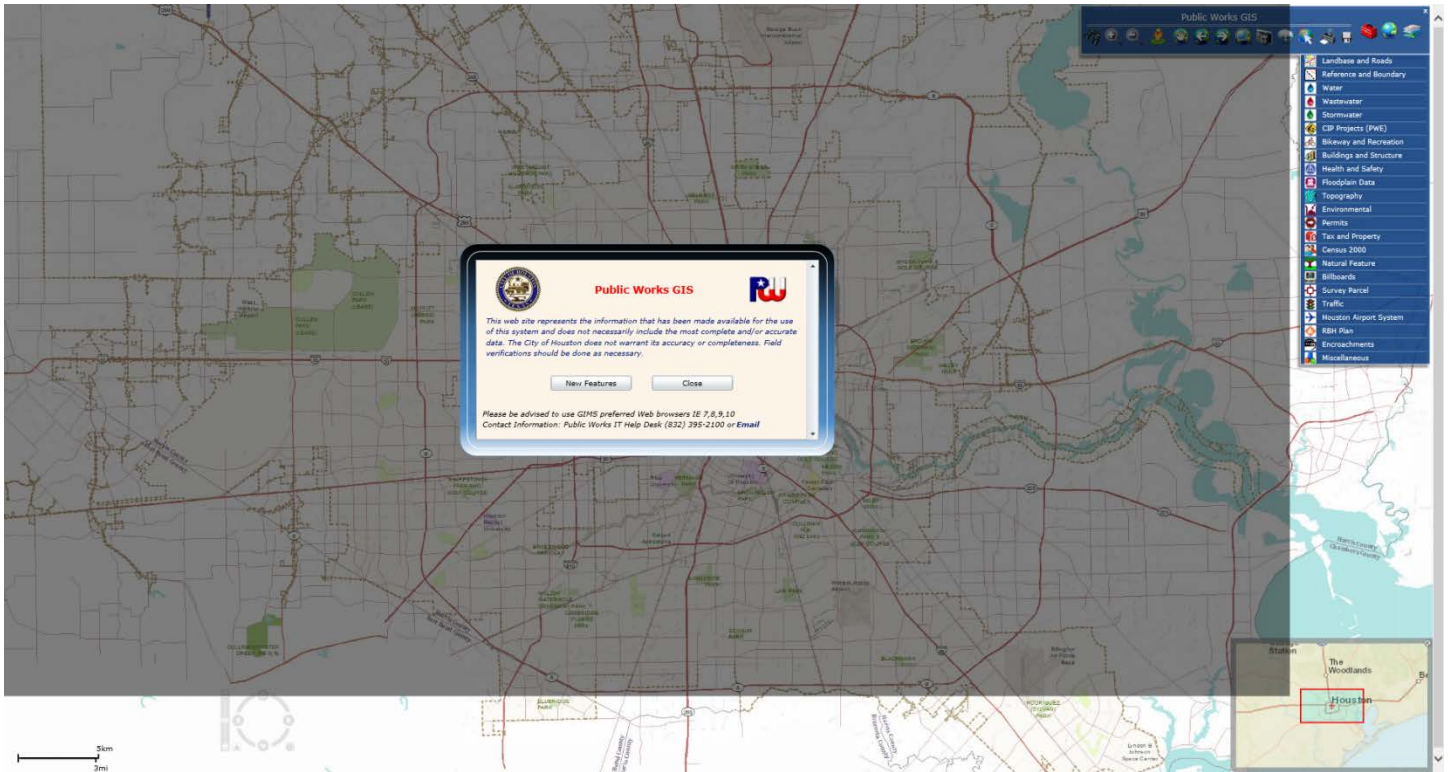
- **GIMS (Public)** (for GIMS large scale click here)
- Mobility Permit Map
- Houston Bikeways Map
- ReBuild Houston 10-Years Plan Map
- Traffic Counts Information
- GIMS Tutorial

Tablets (iPad, Samsung) Users:

ReBuild Houston - CIP Map

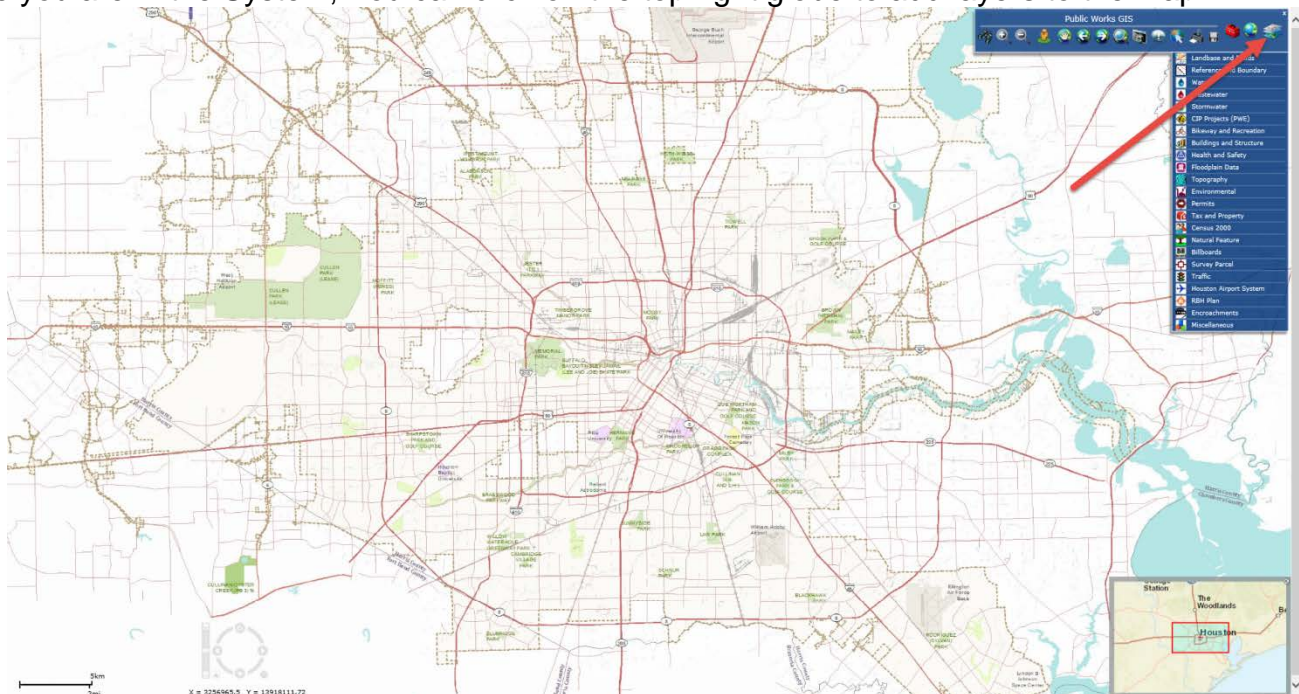
ArcGIS Online Users: [Sign In](#)

This will open a new window with the system.



You can pan and zoom around the map with your mouse just as if you were using google maps.

Once you are in the System, You can click on the top right globe to add layers to the map.



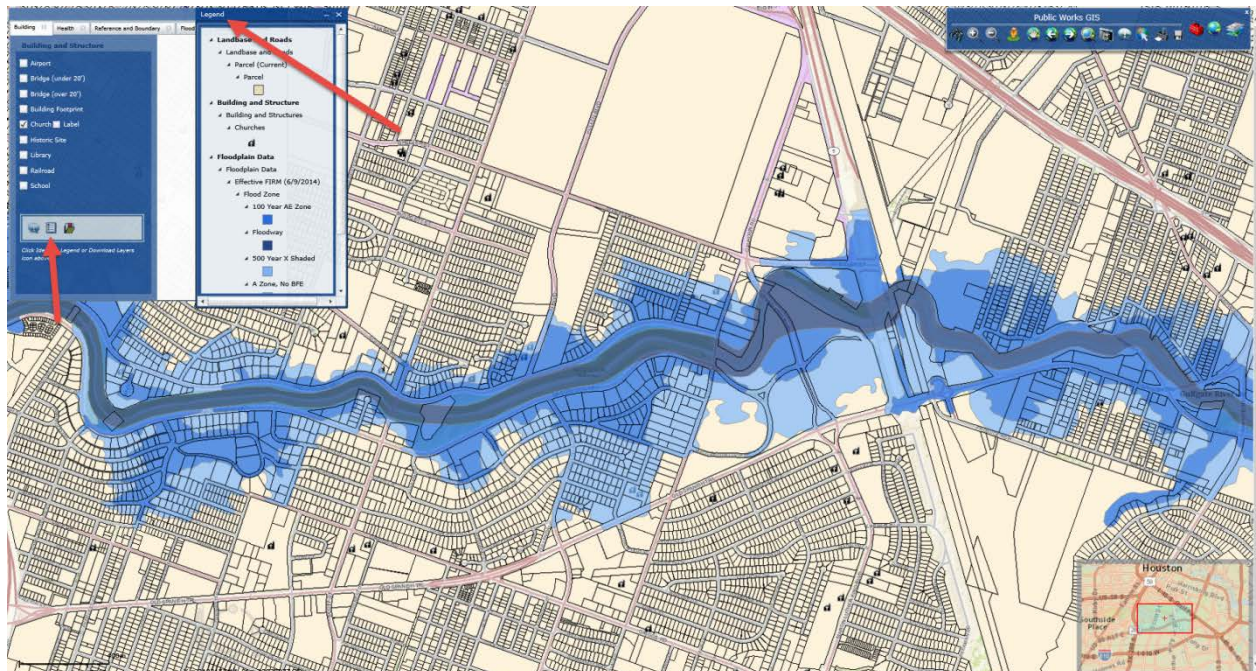
This allows you to view useful information such as landbase and roads, floodplains, stormwater and wastewater drains, encroachments and more. Below is the list of layers.



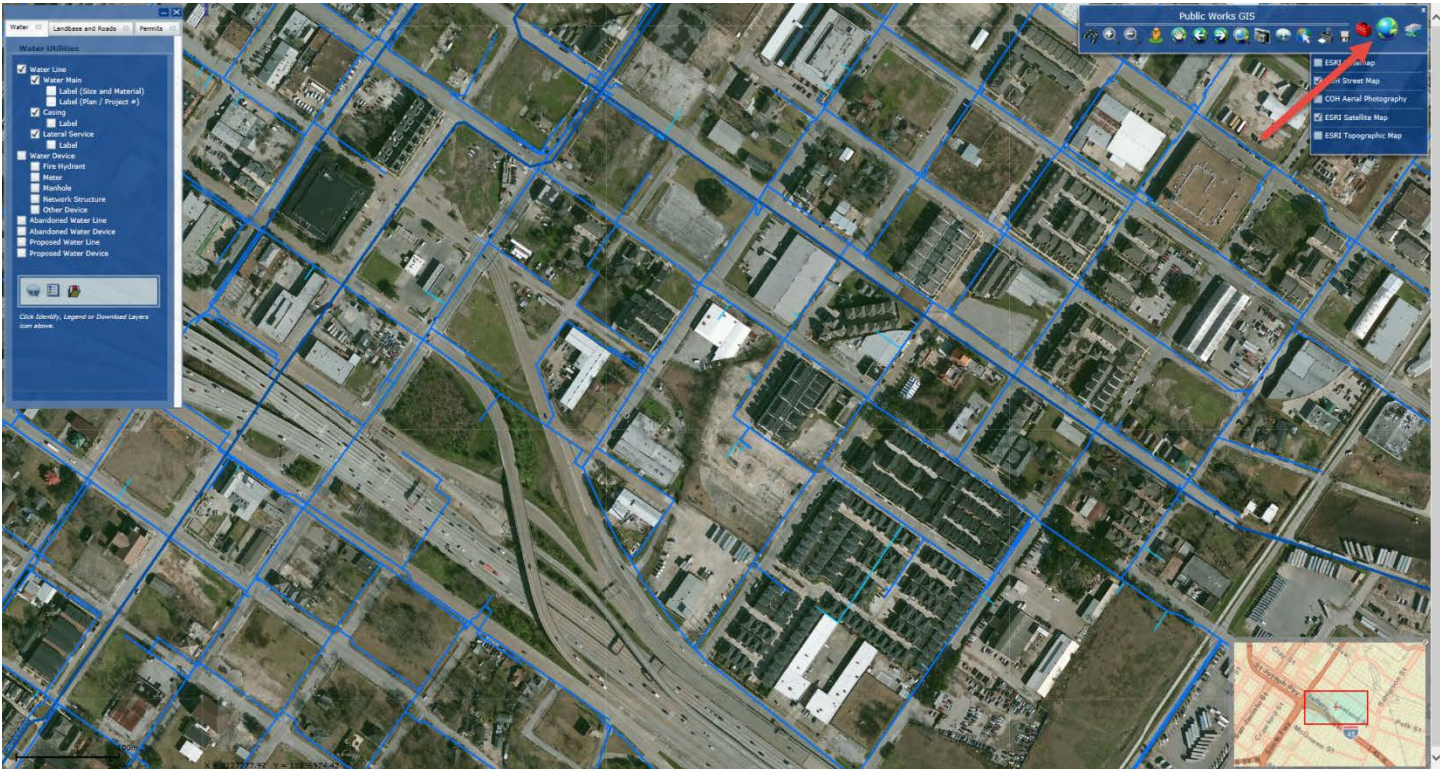
After you click to add a layer, you can click which options you want to see on the left side.



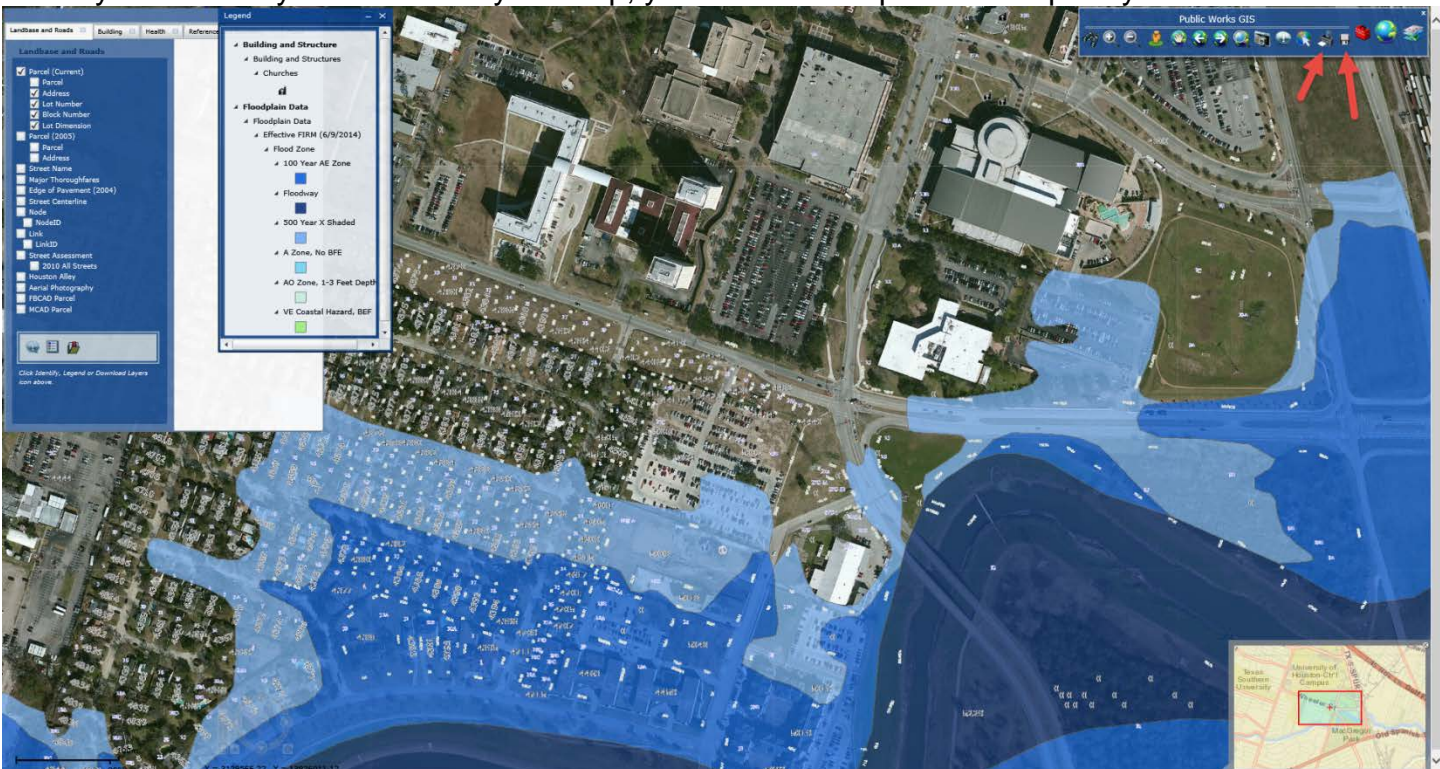
You can build multiple layers and items onto your map to customize the map you need.

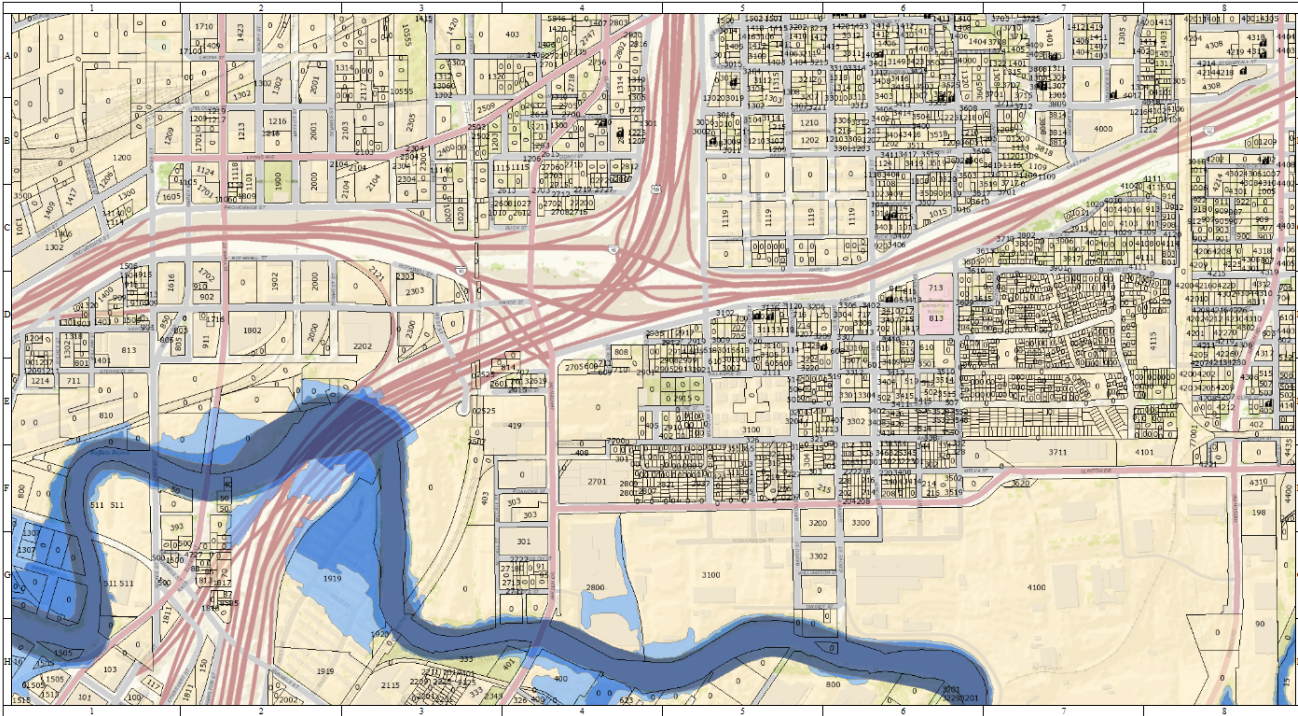


You can also use didn't map views such as satellite to change the appearance of your map.



When you are finally satisfied with your map, you can save or print the map for your use.





1 inch = 141 feet

CITY OF HOUSTON
Department of Public Works and Engineering
Geographic Information & Management System (GIMS)
DISCLAIMER: THIS MAP REPRESENTS THE BEST INFORMATION AVAILABLE TO THE CITY.
THE CITY DOES NOT WARRANT THE ACCURACY OR COMPLETENESS
HEREOF. REVISIONS SHOULD BE DONE AS NECESSARY.

